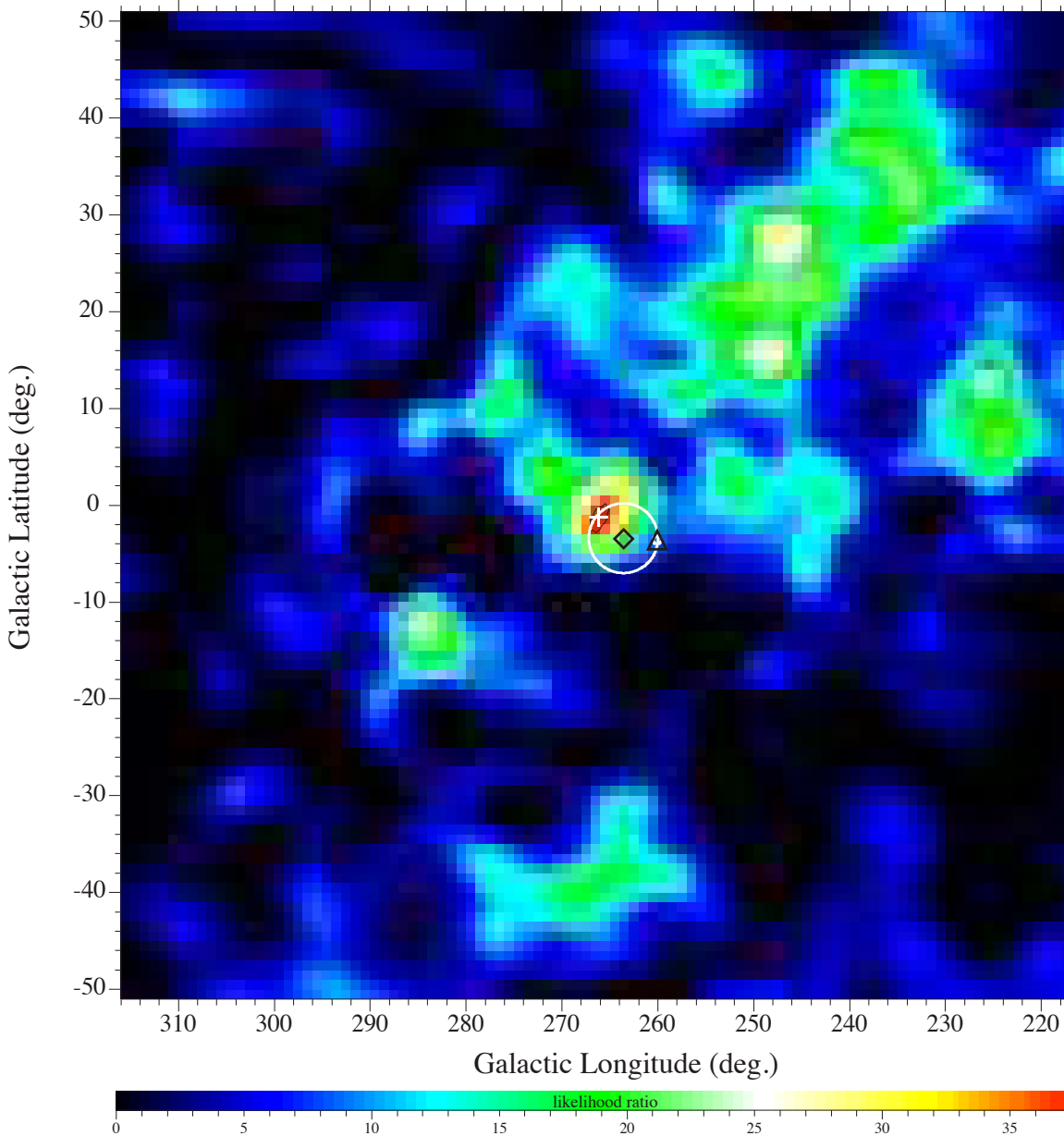


Vela Region, E=1.156 MeV



COMPTEL maximum-likelihood map of the Vela region in the energy range 1.066-1.246 MeV, i.e., $\pm 2\sigma$ around the ^{44}Ti line energy. The cross marks the position of the possible counterpart to SNR RX J0852.0 - 4622. The diamond marks the position of the Vela pulsar and the triangle marks the centre of the Puppis A SNR. The approximate sizes of the Vela and Puppis A SNRs are shown by circles.